



Understanding The Patriarchy

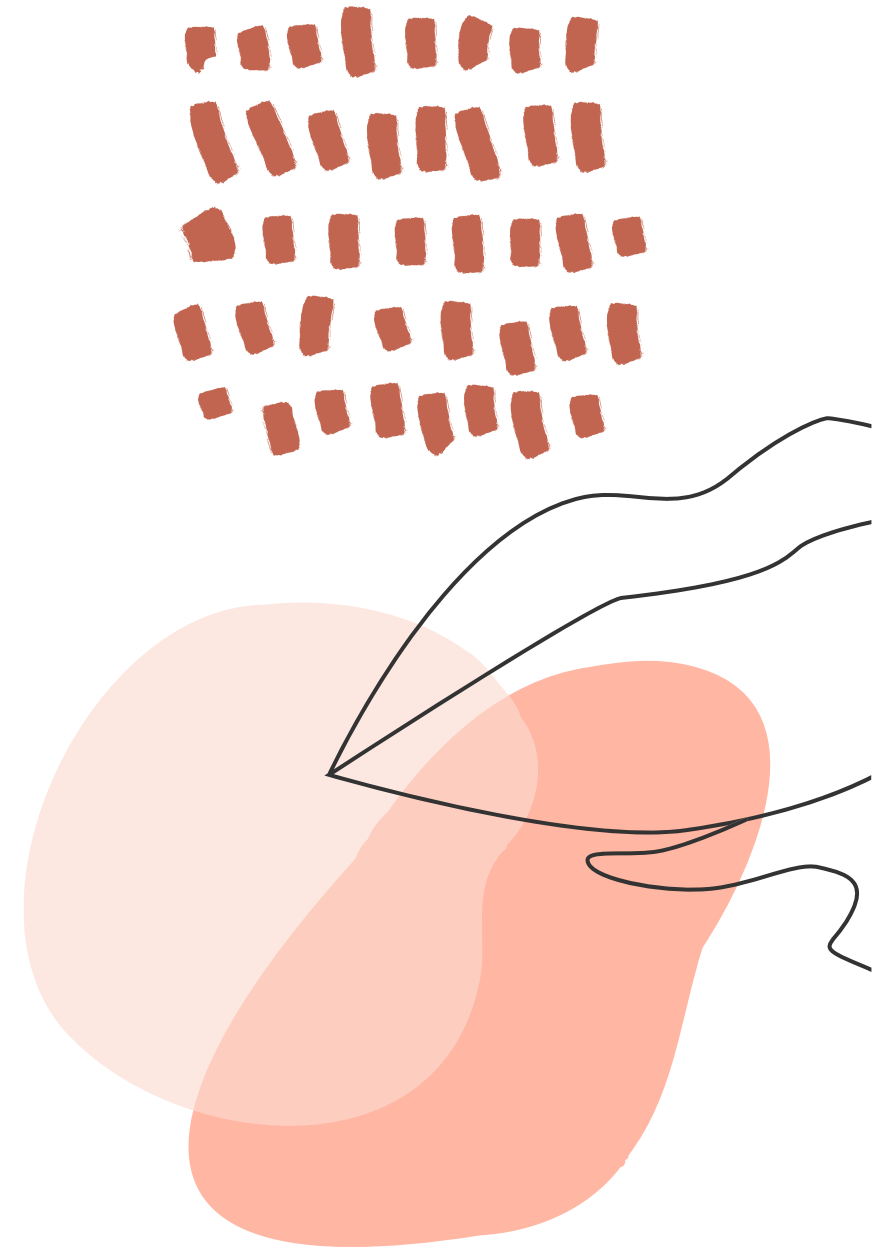
Introduction

What is the patriarchy?

- Etymological origin:
Patriarchy literally means "the rule of the father" and comes from the Greek patriarkhēs, "father or chief of a race".



- Definition:
A system of social structures and practices in which men dominate, oppress, and exploit women.



PRIMITIVE SOCIETIES

- Primitive societies were matrilineal and there was a certain equality in the distribution of tasks
- It was understood that all jobs were of equal importance for the good of the tribe and its future
- People's first religions had a predominant focus on women goddesses and in a woman deity responsible for creation or Mother-Goddess



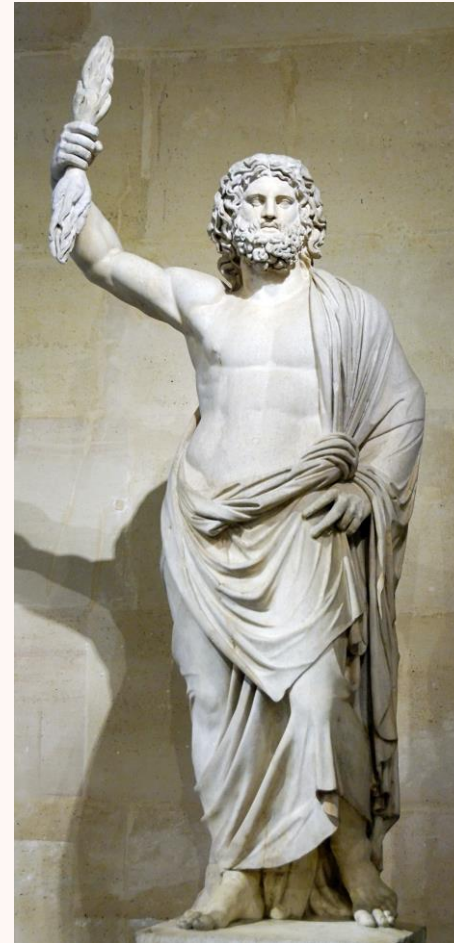
THE SWITCH TO PATRILOCALITY

- Division of labour
 - Concept of fatherhood
- From hunting/gathering to agriculture
- Power imbalance - bargaining power

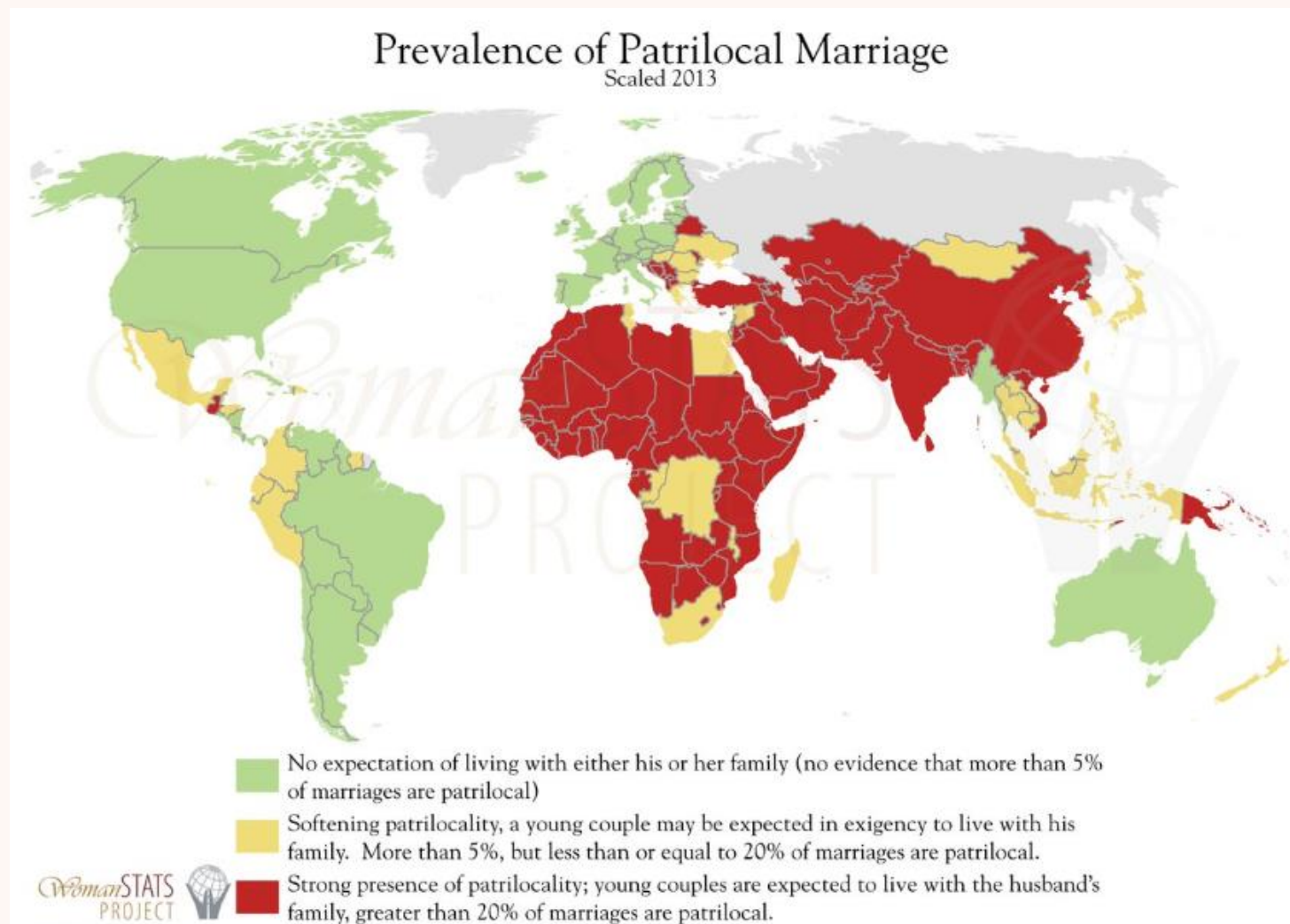


THE SWITCH TO PATRILOCALITY

- Men become the gods



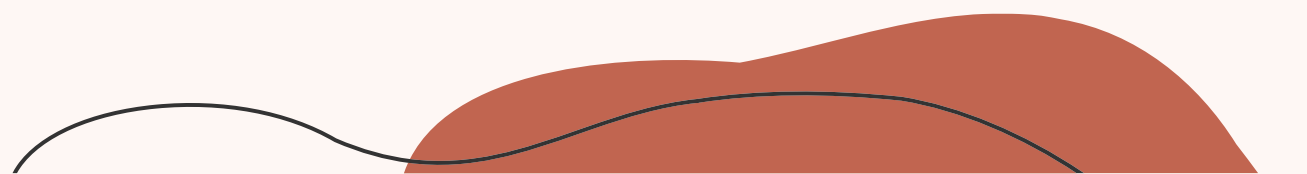
PATRILOCALITY NOWADAYS





EXAMPLES AND THEORIES

Let's analyze from present perspectives that might help us understand the past.

- Present day tribes – to understand the nurture argument
 - Other hominids – to understand the nature argument
- 

EXAMPLES AND THEORIES

- **MBUTI** vs. **LESE** people in Central Africa



EXAMPLES AND THEORIES

- **BONOBOS vs. CHIMPANZEES**





Conclusion

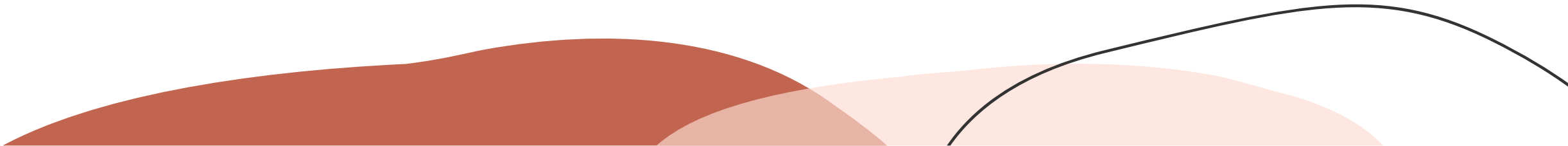
Patriarchy didn't happen overnight.

It is a process that has lasted thousands of years and has been the product of the collaboration of men and women.

In order to change the power dynamics, we must understand the roots.



Questions & answers





Resources

Books:

- The creation of Patriarchy – Gerda Lerner
- The Death of Nature – Caroline Merchant
- La fantasía de la individualidad – Almudena Hernando